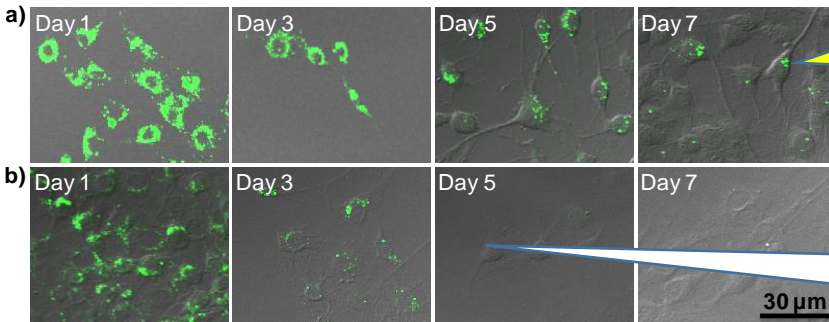


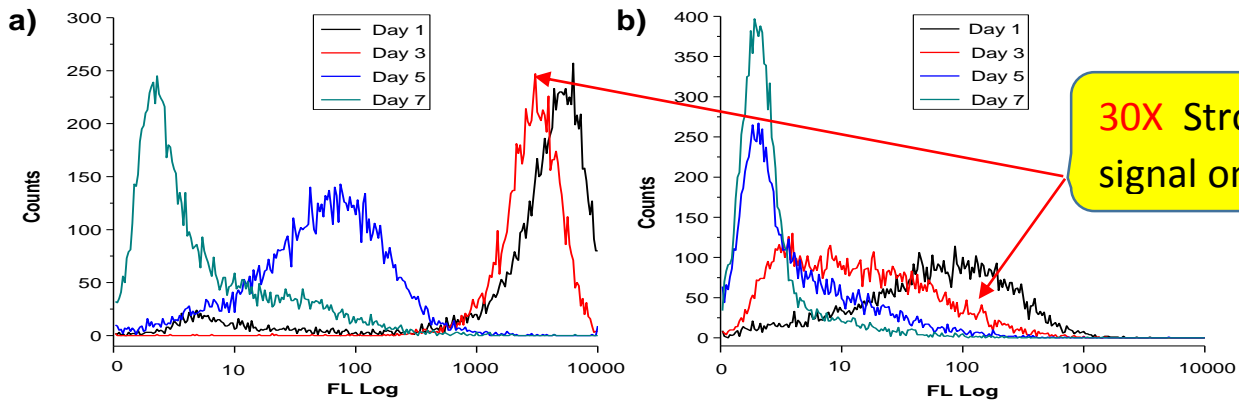
Long-term Cell Tracer

High brightness, better fluorescence stability



a) Our cell tracer lasts 7 to 30 days

b) Other famous brand disappears on 5th day



30X Stronger signal on 3rd day

Flow cytometry overlay histograms of MCF-7 cells at different time point after labeling with (a) 2 nM Cell Tracer or (b) 2 nM quantum dot.

Comparison between our Cell Tracer (Cat.# P710) and other QDs

	Working concentration	Low Toxicity	Negative effect on stem cells	Customized targeting ability	Tracing ability
a) Our Cell Tracer	0.1 ~ 2 nM	✓	✓	✓	9~12 generations
b) Other QDs	2 ~ 15 nM	✗	✗	✗	5~6 generations

Cell Tracer has advantage over other QDs in many aspects including working concentration, toxicity and flexibility etc.

For more information please visit: www.101Bio.com/P710.php