

Reversible 1-min Hot Start DNA Polymerase (101Bio Taq)

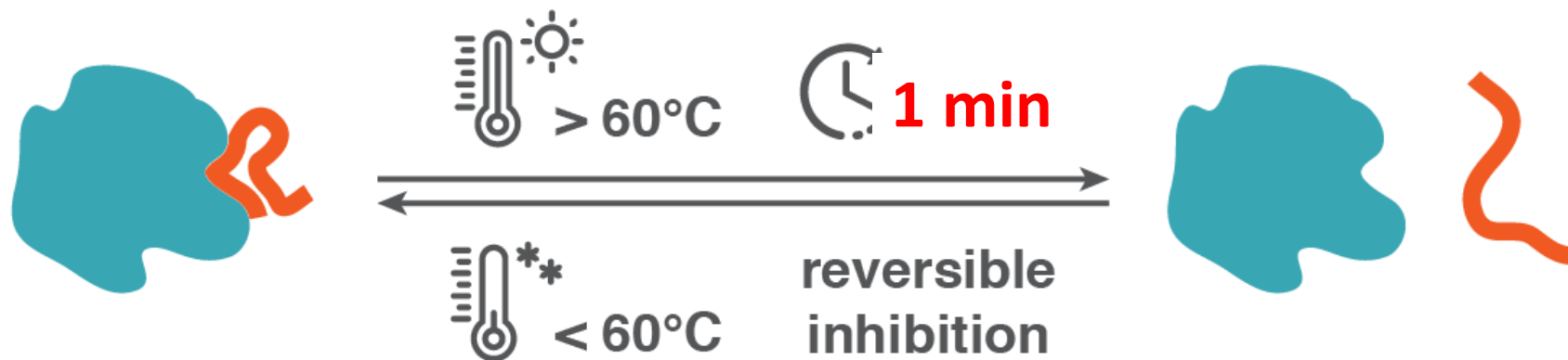
Superior Performance

June, 2016

101Bio Taq DNA Polymerase – 1 min Hot Start, Reversible

Inactive Taq DNA Polymerase

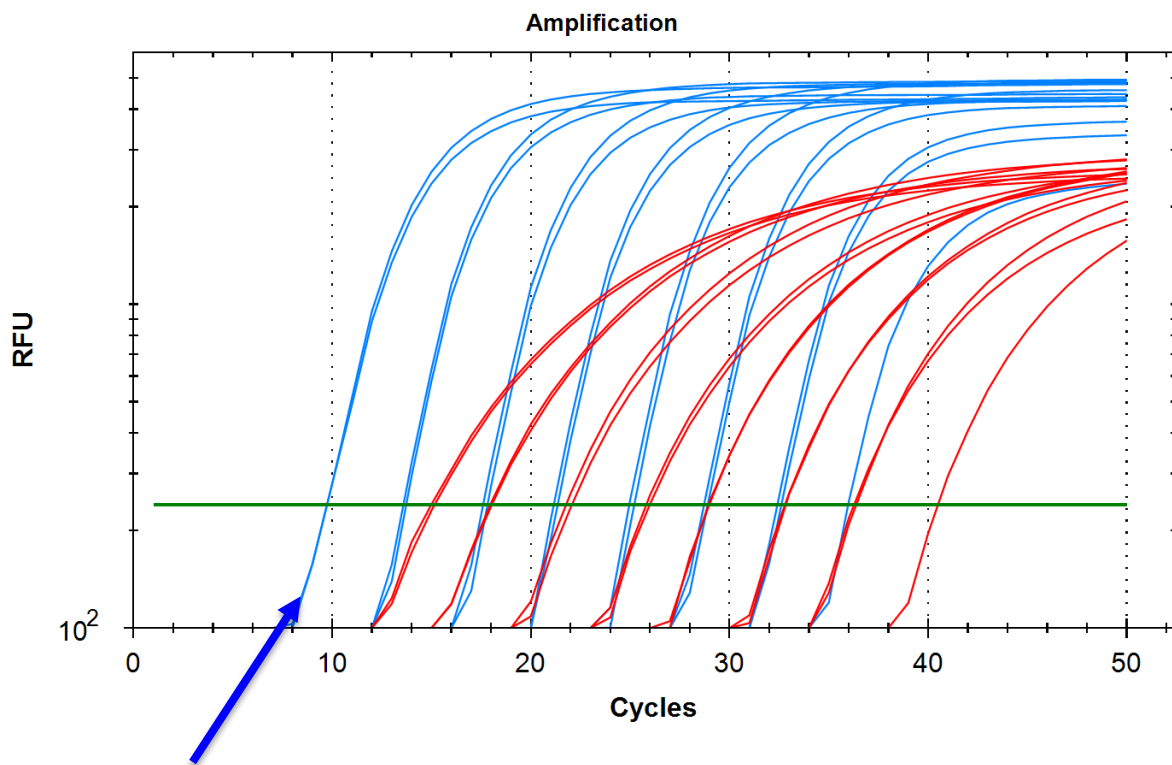
Active Taq DNA Polymerase
+ reversible inhibitor



Unique Advantages of 101Bio Taq DNA Polymerase

- Reversible enzyme activation
- **Fast Hot Start** – 30 seconds to 1 minute
- Exceptional sensitivity (10X)
- Superior stability – No freeze-thaw steps
- **Reduced nonspecific amplification**

10X higher sensitivity than industry standard

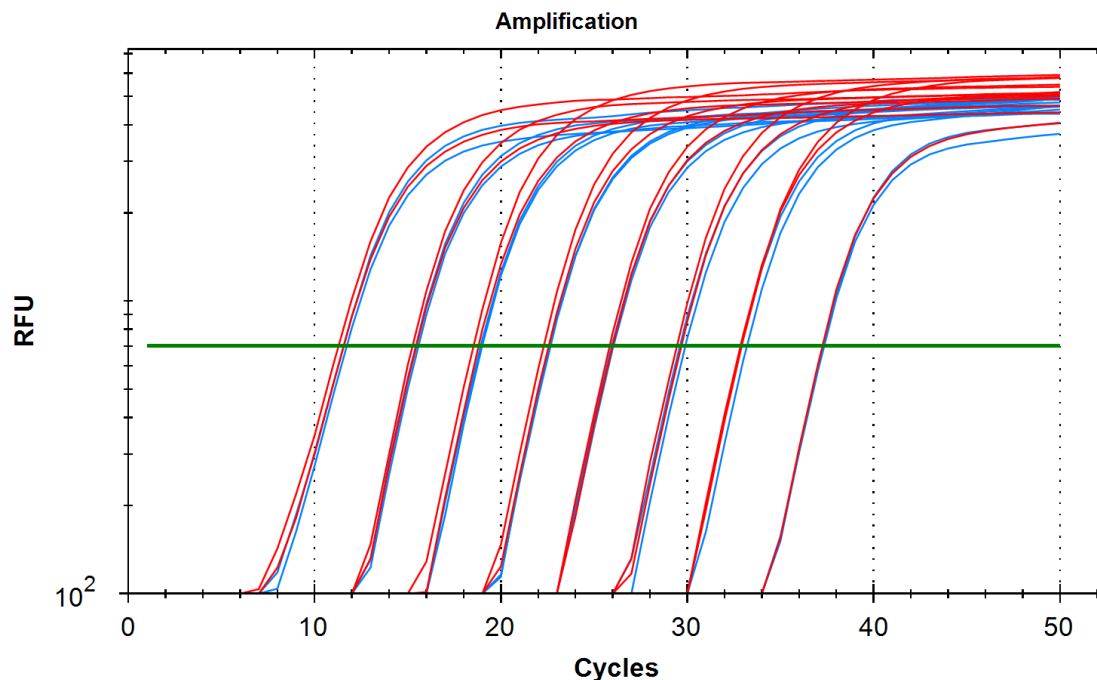


Blue: 101Bio Taq, 10X higher sensitivity

Red: Gold Taq (Company LT)

Template amount: 10^1 - 10^8 copies

Superior stability – no activity loss after 1 week at 37°C

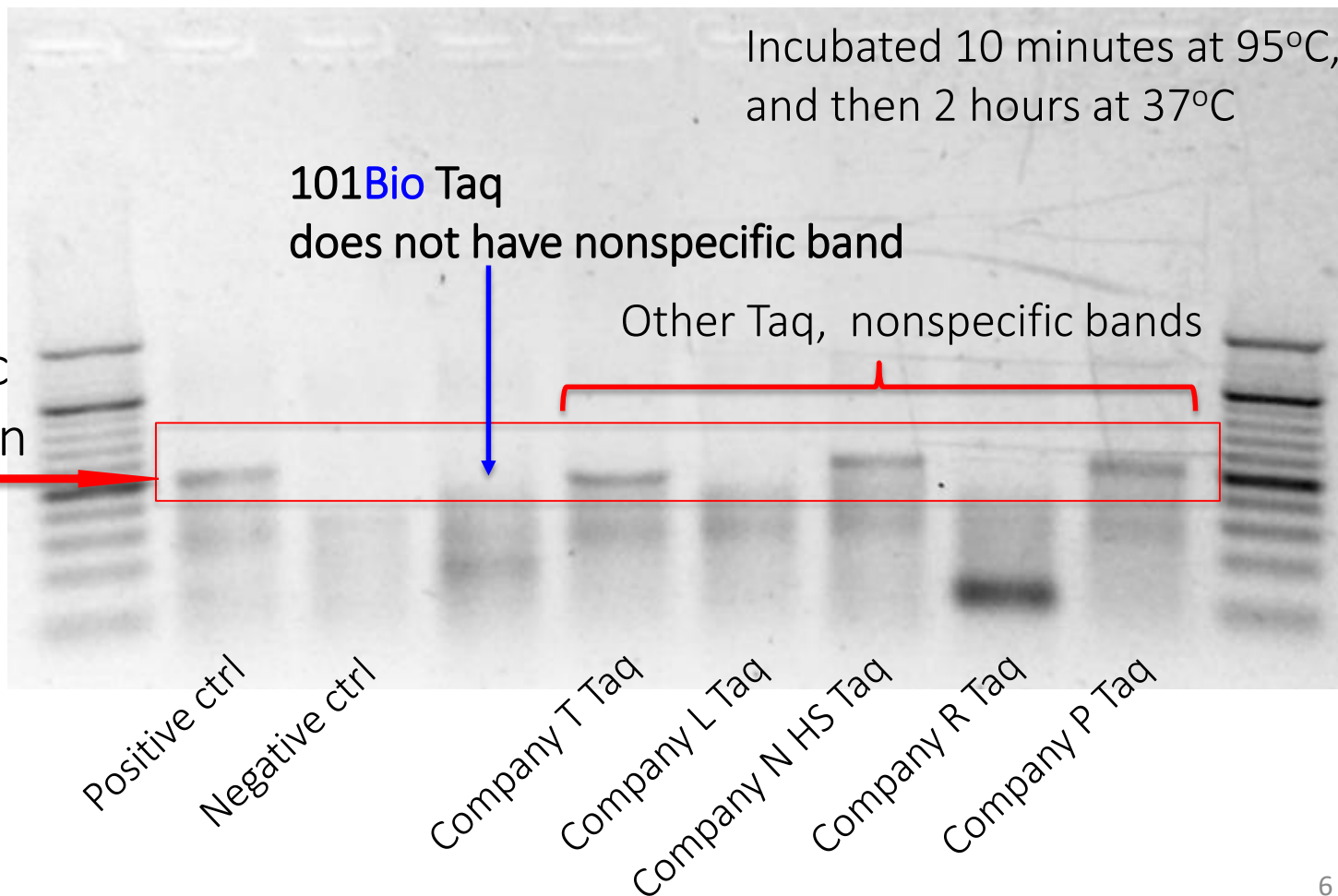


Blue: 101Bio Taq, incubated at 37°C for 7 days, **No activity loss !**
(diluted to working concentration)

Red: New 101Bio Taq

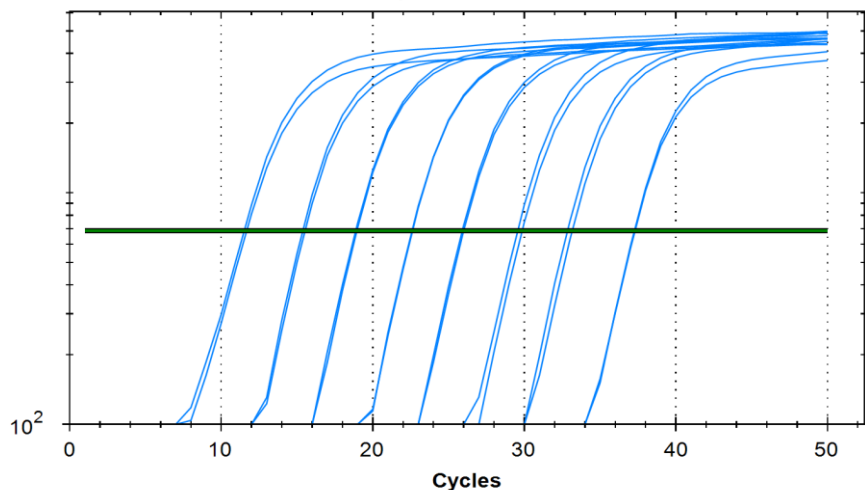
Template amount: 10^1 - 10^8 copies

Robust inhibition of nonspecific amplification, even after PCR

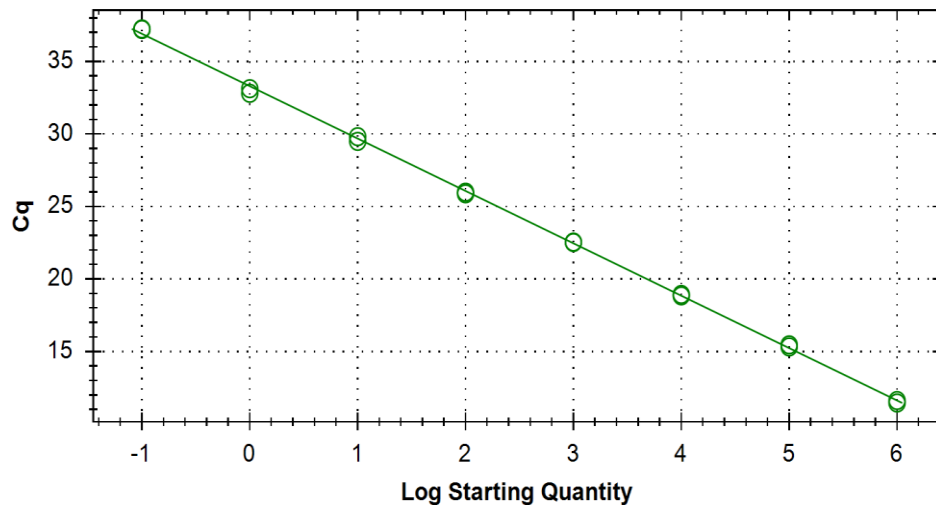


Exceptional sensitivity and broad linearity – from 10^1 to 10^8 copies of template

Amplification



Standard Curve



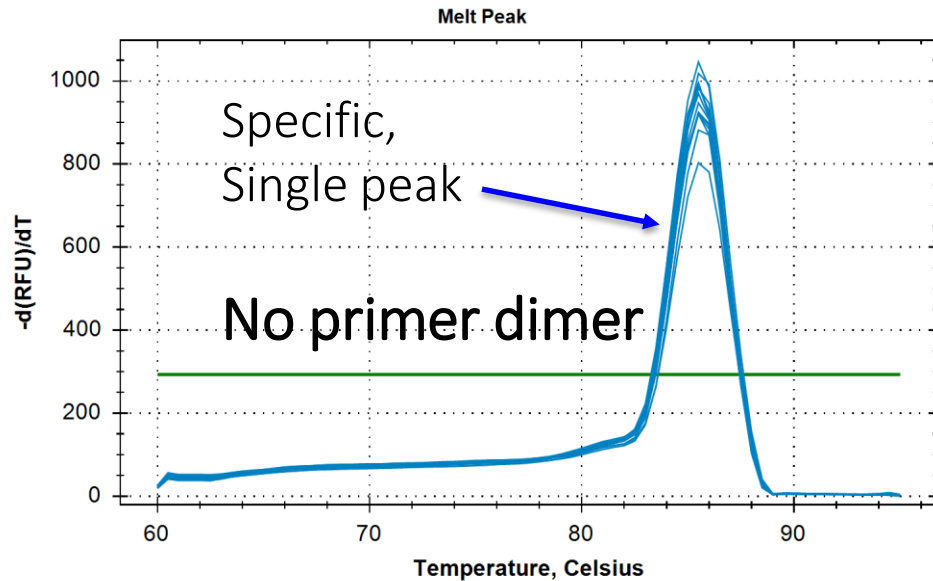
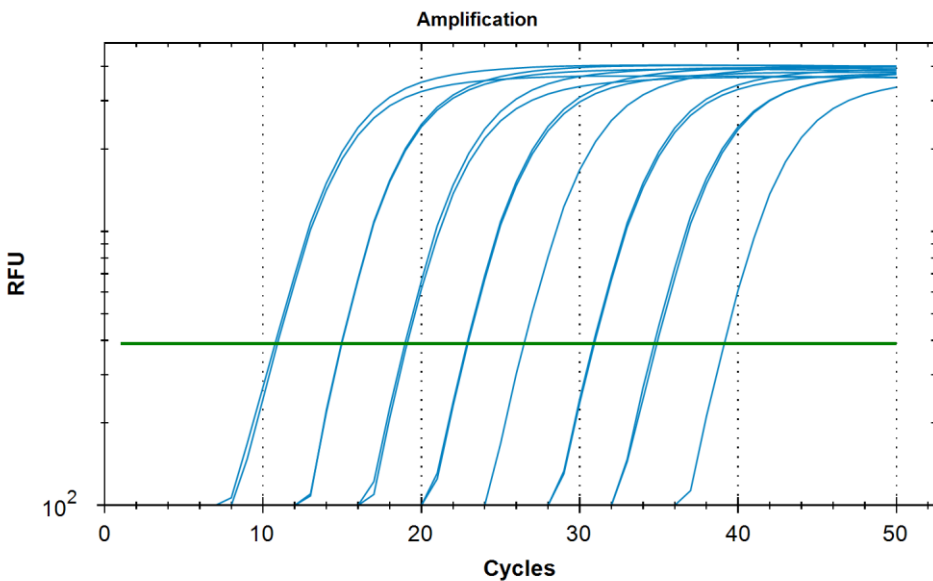
101Bio Taq

Template amount: 10^1 - 10^8 copies

Taqman assay

E=90.8% $R^2 = 0.999$

No primer dimers, uniform melting curve



101Bio Taq

Template amount: 10^1 - 10^8 copies

SYBR Green assay